

## INFRARED CAMERA i7

Infrared cameras are an invaluable tool for fast and precise analysis of various aspects linked with building conservation and restoration such as: the identification of heat sources that menace the stability of internal microclimates; water infiltrations and structural analysis. Internal recording of images allows precise documentation of cases studied before and after intervention.



### Easy to use

Light and ergonomic, designed for fast identification of heat sources or water infiltrations. Functions are intuitive: just turn it on to start inspection!

### Image recording

Includes SD card that can memorize up to 5000 JPEG images. Downloads directly to PC via USB

### High Quality

Thanks to its elevated thermal sensitivity (0,12 NETD), minimal temperature differences can be detected through a clear image on the large LCD display.

### Fast measurement

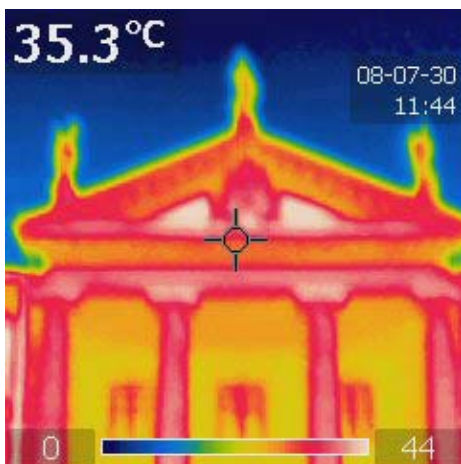
Easy to use Max area/Min area function allow instant identification of the highest and lowest temperatures on display: never lose essential data!

### Safe temperature visualization

No direct contact is necessary: just aim to see maximum and minimum temperature range.

### Complete documentation

The infrared camera can store up to 5000 images in the standard JPEG format. Then your images can be sent via email or inserted in any document or presentation.



## LAMBDA SpA

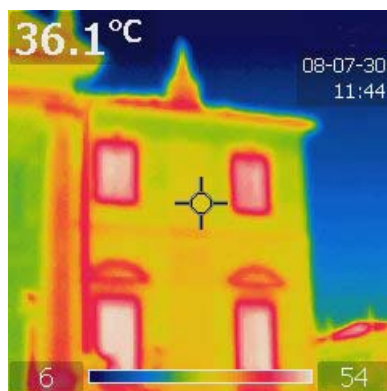
Via dell'impresa 1 – 36040 Brendola (VI) ITALY  
Tel. (+39) 0444.349165 Fax (+39) 0444.349954  
[www.lambdaspa.com](http://www.lambdaspa.com) [info@lambdaspa.com](mailto:info@lambdaspa.com)

**INCLUDES:**

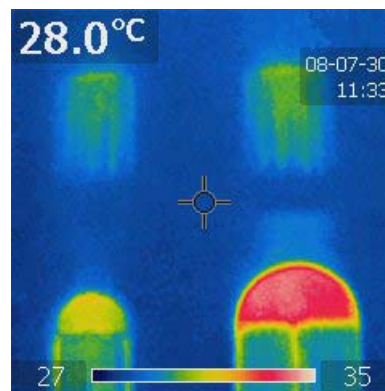
Infrared camera, transport case, power supply, hand strap, USB cable, manual, interchangeable cable plug, battery, miniSD card 512MB, software QuickReport

**FEATURES:**

<b>Images</b>	Visual Range 25° x 25° Minimum focal distance 0.5 m FPA (Focal Plane Array) detector microbolometric uncooled, 120 x 120 pixel Fixed focus
<b>Display</b>	Color 2,8" LCD, 16.000 colors
<b>Measurement</b>	Temperature range -20°C ... +250°C Spectral range 7,5...15µm Thermal sensitivity/NETD 0,12°C @ 25°C accuracy ±2°C, ±2% reading Measuring mode: central point, Min area and Max area. Menu: Color or black and white, automatic/manual Set up: Date /time, language, switch off, display luminosity;
<b>Image storage</b>	Stores up to 5.000 images. miniSD removable card 128 MB included Standard JPEG format
<b>Laser LocatIR</b>	Classification Class 2 diode Laser AlGaInP: 1mW/635 nm (red)
<b>battery</b>	Lithium ion, 5 hours of continuous use Charge level on display Internal charger CA Adaptor CA, 90-260 VCA, 50/60 Hz 11-16 VCC
<b>Operating range:</b>	-15°C...+50°C Protection degree IP43
<b>Charachteristics</b>	Weight 340g size (l. x w. x h.)223 mm x 79 mm x 83 mm
<b>Interface</b>	Image transfer to PC via USB



The stone elements of the façade are highlighted because of the different heating compared to the brick structure.



The Infrared camera can spot the different capacity of the drapes on the window to provide insulation from the strong outside heat.

**LAMBDA SpA**

Via dell'impresa 1 – 36040 Brendola (VI) ITALY  
 Tel. (+39) 0444.349165 Fax (+39) 0444.349954  
[www.lambdaspa.com](http://www.lambdaspa.com) [info@lambdaspa.com](mailto:info@lambdaspa.com)

Azienda con Sistema di Gestione  
per la Qualità certificato secondo



UNI EN ISO 9001:2008  
UNI EN ISO 13485:2004